

ON NONOVERLAPPING DOMAIN DECOMPOSITION METHODS FOR THE INCOMPRESSIBLE NAVIER-STOKES EQUATIONS*

XUEJUN XU¹, C.O. CHOW² AND S.H. LUI³

Abstract. In this paper, a Dirichlet-Neumann substructuring domain decomposition method is presented for a finite element approximation to the nonlinear Navier-Stokes equations. It is shown that the Dirichlet-Neumann domain decomposition sequence converges geometrically to the true solution provided the Reynolds number is sufficiently small. In this method, subdomain problems are linear. Other version where the subdomain problems are linear Stokes problems is also presented.

Mathematics Subject Classification. 65F10, 65N30, 65N55.

Received: April 1, 2004.

1. INTRODUCTION

With the development of parallel computers, domain decomposition methods (DDMs) have become increasingly important tools for solving PDEs. In general, there exist two kinds of domain decomposition methods. One is the overlapping Schwarz method which is often referred to as the Schwarz alternating method [3, 12, 13, 15, 18] and the other is the class of nonoverlapping domain decomposition methods. The distinction is whether the domain is decomposed into overlapping or nonoverlapping subdomains. In this paper, we shall focus our attention on nonoverlapping domain decomposition methods. These DDMs have been studied extensively for linear PDEs, see [11, 17, 20] and the references therein. The literature for nonlinear problems is rather sparse. The efficiency of DDMs for the Navier-Stokes equations has already been demonstrated by many authors. See [1, 2, 5–7, 10] for just a small sample. Recently, a so-called optimization-based DDM has been proposed in [9]. It is shown that this DDM is convergent, but no convergence rate is given. See the references in the books and review articles mentioned above and the proceedings of the DDM conferences for many more references.

This paper seems to be the first attempt to give a convergence rate for a nonoverlapping DDM for nonlinear equations. We shall present a Dirichlet-Neumann (D-N) iterative substructuring algorithm for a finite element approximation to the Navier-Stokes (N-S) equations. For sufficiently small Reynolds number, we prove that the

Keywords and phrases. Nonoverlapping domain decomposition, incompressible Navier-Stokes equations, finite elements, non-linear problems.

* This work is subsidized by the special funds for major state basic research projects under 2005CB321701 and a grant from the National Science Foundation (NSF) of China (No. 10471144). This work was in part supported by a grant from NSERC of Canada.

¹ LSEC, Institute of Computational Mathematics, Academy of Mathematics and System Sciences, Chinese Academy of Sciences, PO Box 2719, Beijing, 100080, China. xxj@lsec.cc.ac.cn

² Institute of Mathematics, Academia Sinica, Taipei 11529, Taiwan. cchow@alum.mit.edu

³ Department of Mathematics, University of Manitoba, Winnipeg, Manitoba, R3T 2N2, Canada. luish@cc.umanitoba.ca

© EDP Sciences, SMAI 2005

D-N substructuring method is optimal, *i.e.*, the convergence rate of this method is independent of the mesh size. Because the Reynolds number is small, the N-S equations are just a small perturbation of the Stokes equations. Our method of proof relies heavily on this fact and we follow the framework developed in [16].

For our method, the subdomain problems are linear equations. We shall also present a linear D-N algorithm where the subdomain problems are linear Stokes equations. We also discuss a Neumann-Neumann (N-N) iterative substructuring method for the N-S equations. In [14], some overlapping Schwarz algorithms were developed for the N-S equations. This paper can be regarded as a continuation of [14] for the nonoverlapping case.

This paper is organized as follows. In Section 2, we shall introduce the model problem and its corresponding finite element approximation. A D-N iterative algorithm for this discrete system will be given in Section 3. Other linear D-N iterative algorithms will be considered in Section 4 followed by a short discussion on a N-N algorithm in Section 5. In Section 6, we illustrate the behavior of the linear D-N algorithms for a flow in a square.

2. MODEL PROBLEM

We consider the following N-dimensional, steady, viscous incompressible Navier-Stokes equations:

$$\begin{cases} -\frac{1}{R_e}\Delta u + (u \cdot \nabla)u + \nabla p = f, & \text{on } \Omega, \\ \operatorname{div} u = 0, & \text{on } \Omega, \\ u = 0, & \text{on } \partial\Omega, \end{cases} \tag{2.1}$$

where Ω is a convex polyhedral domain in R^N ($N \leq 3$), $u \in (H_0^1(\Omega))^N$, f is a forcing term in $(L^2(\Omega))^N$, p is the pressure and R_e is the Reynolds number.

Let $V = (H_0^1(\Omega))^N$, and

$$M = L_0^2(\Omega) = \{q \in L^2(\Omega) \mid \int_{\Omega} q dx = 0\}.$$

The variational formula of (2.1) is to find $u \in V$ and $p \in M$ such that

$$\begin{cases} \frac{1}{R_e}a(u, v) + b(u, u, v) + c(v, p) = (f, v), & \forall v \in V, \\ c(u, q) = 0, & \forall q \in M, \end{cases} \tag{2.2}$$

where (\cdot, \cdot) denotes the usual inner product on $(L^2(\Omega))^N$ and

$$\begin{aligned} a(u, v) &= \int_{\Omega} \nabla u \cdot \nabla v dx, \\ b(u, v, w) &= \frac{1}{2} \left(\sum_{i,j=1}^N \int_{\Omega} u_i \frac{\partial v_j}{\partial x_i} w_j dx - \sum_{i,j=1}^N \int_{\Omega} u_i \frac{\partial w_j}{\partial x_i} v_j dx \right), \\ c(v, p) &= - \int_{\Omega} p \operatorname{div} v dx. \end{aligned}$$

It is known [19] that

$$\begin{cases} b(u, v, w) = -b(u, w, v), \quad b(u, v, v) = 0, \quad \forall u, v, w \in V, \\ |b(u, v, w)| \leq C_0 \|u\| \|v\| \|w\|, \quad \forall u, v, w \in V, \end{cases} \tag{2.3}$$

where $\|v\| = a(v, v)^{\frac{1}{2}}$, $\forall v \in V$. In this paper C with or without subscript denotes a positive constant.

Under the condition

$$R_e < \sqrt{\frac{1}{C_0 \|f\|_{-1}}}, \quad (2.4)$$

equation (2.1) has a unique solution [19]. Here, $\|\cdot\|_{-1}$ denotes the norm on the dual space $H^{-1}(\Omega)$.

We now consider some finite element subspaces of V and M . Let $V_h \subset V$ and $M_h \subset L^2(\Omega)$ be a family of finite element subspaces of V and M , respectively, which satisfy the following LBB (inf-sup) condition:

$$\inf_{q \in M_h \cap L_0^2(\Omega)} \sup_{v \in V_h} \frac{c(v, q)}{\|v\| \|q\|_0} \geq \beta_0 > 0, \quad (2.5)$$

where β_0 is a constant independent of the mesh size h and $\|\cdot\|_0$ is the $L^2(\Omega)$ norm.

The finite element approximation of (2.2) can be written as:

$$\begin{cases} \frac{1}{R_e} a(u_h, v) + b(u_h, u_h, v) + c(v, p_h) &= (f, v), & \forall v \in V_h, \\ c(u_h, q) &= 0, & \forall q \in M_h \cap L_0^2(\Omega), \end{cases} \quad (2.6)$$

for some $u_h \in V_h$, $p_h \in M_h \cap L_0^2(\Omega)$.

It is known [19] that under the assumptions (2.4), (2.5), the finite element equations (2.6) have a unique solution which satisfies the following estimates

$$\|u_h\| \leq R_e \|f\|_{-1}, \quad (2.7)$$

and

$$\|p_h\|_0 \leq \frac{1}{\beta_0} \|f\|_{-1} (2 + C_0 R_e^2 \|f\|_{-1}). \quad (2.8)$$

Remark 2.1. There exist numerous finite element spaces satisfying the above conditions, especially condition (2.5). Refer to [4, 8] for details.

Remark 2.2. To ensure uniqueness of the pressure in the finite element equations (2.6), we may assume that the pressure has a zero mean value.

We now describe a domain decomposition procedure. First decompose Ω into two nonoverlapping subdomains Ω_1 and Ω_2 such that $\bar{\Omega}_1 \cup \bar{\Omega}_2 = \bar{\Omega}$ and Ω_2 is not an interior subdomain (*i.e.*, $\bar{\Omega}_2 \not\subset \Omega$). We suppose that the interface $\Gamma = \bar{\Omega}_1 \cap \bar{\Omega}_2$ does not cut across any finite element. We also assume that the point mentioned in Remark 2.2 belongs to Ω_1 . Define, for $k = 1, 2$,

$$\begin{aligned} V_{h,k} &= \{v_h|_{\Omega_k} : v_h \in V_h\}, \\ V_{h,k}^0 &= V_{h,k} \cap (H_0^1(\Omega_k))^N, \\ M_{h,k} &= \{q_h|_{\Omega_k} : q_h \in M_h\}, \\ \Phi_h &= \{v_h|_{\Gamma} : v_h \in V_h\}. \end{aligned}$$

We now consider the following two-domain problem: find $(u_{h,k}, p_{h,k}) \in V_{h,k} \times M_{h,k}$, $k = 1, 2$ such that

$$\frac{1}{R_e} a_1(u_{h,1}, v) + b_1(u_{h,1}, u_{h,1}, v) + c_1(v, p_{h,1}) = (f, v)_1, \quad \forall v \in V_{h,1}^0, \tag{2.9}$$

$$c_1(u_{h,1}, q) = 0, \quad \forall q \in M_{h,1} \cap L_0^2(\Omega_1), \tag{2.10}$$

$$\gamma_0 u_{h,1} = \gamma_0 u_{h,2}, \quad \text{on } \Gamma, \tag{2.11}$$

$$\frac{1}{R_e} a_2(u_{h,2}, v) + b_2(u_{h,2}, u_{h,2}, v) + c_2(v, p_{h,2}) = (f, v)_2 + (f, \rho_{h,1} \gamma_0 v)_1 \tag{2.12}$$

$$\begin{aligned} & -\frac{1}{R_e} a_1(u_{h,1}, \rho_{h,1} \gamma_0 v) \\ & -b_1(u_{h,1}, u_{h,1}, \rho_{h,1} \gamma_0 v) \\ & -c_1(\rho_{h,1} \gamma_0 v, p_{h,1}), \quad \forall v \in V_{h,2}, \end{aligned}$$

$$c_2(u_{h,2}, q) = 0, \quad \forall q \in M_{h,2} \tag{2.13}$$

$$\int_{\Omega_1} p_{h,1} dx = - \int_{\Omega_2} p_{h,2} dx. \tag{2.14}$$

Here, $(\cdot, \cdot)_k$ denotes the inner product on $(L^2(\Omega_k))^N$, $\gamma_0 v \in \Phi_h$ is the trace on Γ of the function $v \in V_h$ and $\rho_{h,k}$ ($k = 1, 2$) is an extension operator from Φ_h to $V_{h,k}$. In practical implementations, these extensions can be taken equal to the finite element interpolant which belongs to $V_{h,i}$, equal to $\gamma_0 v$ at the nodes on the interface, and vanishes at the internal nodes in Ω_i . For $k = 1, 2$, let

$$\begin{aligned} a_k(u, v) &= \int_{\Omega_k} \nabla u \cdot \nabla v dx, \quad \forall u, v \in V_{h,k}, \\ b_k(u, v, w) &= \frac{1}{2} \left(\sum_{i,j=1}^N \int_{\Omega_k} u_i \frac{\partial v_j}{\partial x_i} w_j dx - \sum_{i,j=1}^N \int_{\Omega_k} u_i \frac{\partial w_j}{\partial x_i} v_j dx \right), \quad \forall u, v, w \in V_{h,k}, \\ c_k(v, p) &= - \int_{\Omega_k} p \operatorname{div} v dx, \quad \forall v \in V_{h,k}, p \in M_{h,k}. \end{aligned}$$

Define

$$\|v\|_k = a_k(v, v)^{\frac{1}{2}}, \quad \forall v \in V_{h,k}.$$

Then we have [19]

$$\begin{cases} b_k(u, v, w) &= -b_k(u, w, v), \quad b_k(u, v, v) = 0, \quad \forall u, v, w \in V_{h,k}, \\ |b_k(u, v, w)| &\leq C \|u\|_k \|v\|_k \|w\|_k, \quad \forall u, v, w \in V_{h,k}. \end{cases}$$

Lemma 2.1. *The function (u_h, p_h) is the solution of (2.6) if and only if $(u_{h,1}, p_{h,1})$ and $(u_{h,2}, p_{h,2})$ satisfy the split problems (2.9)-(2.14), where $u_{h,k} = u_h|_{\Omega_k}$, $p_{h,k} = p_h|_{\Omega_k}$, $k = 1, 2$.*

Proof. Let us first check that if (u_h, p_h) is the solution of (2.6), then $(u_{h,1}, p_{h,1})$ and $(u_{h,2}, p_{h,2})$ satisfy (2.9)–(2.14).

For any $v \in V_{h,1}^0$, $q \in M_{h,1} \cap L_0^2(\Omega_1)$, define (\tilde{v}, \tilde{q}) as follows,

$$\begin{aligned} \tilde{v} &= v \text{ in } \Omega_1, \quad \tilde{v} = 0 \text{ in } \Omega_2; \\ \tilde{q} &= q \text{ in } \Omega_1, \quad \tilde{q} = 0 \text{ in } \Omega_2. \end{aligned}$$

Then

$$\frac{1}{R_e} a_1(u_{h,1}, v) + b_1(u_{h,1}, u_{h,1}, v) + c_1(v, p_{h,1}) = \frac{1}{R_e} a(u_h, \tilde{v}) + b(u_h, u_h, \tilde{v}) + c(\tilde{v}, p_h) = (f, \tilde{v}) = (f, v)_1,$$

and

$$c_1(u_{h,1}, q) = c(u_h, \tilde{q}) = 0,$$

which are (2.9), (2.10). Equations (2.11), (2.14) are obviously satisfied because $u_h \in V_h$, and $p_h \in M_h \cap L_0^2(\Omega)$.

On the other hand, for any $v \in V_{h,2}$, define $\tilde{v} \in V_h$ as follows,

$$\tilde{v} = \rho_{h,1}\gamma_0 v \text{ in } \Omega_1, \quad \tilde{v} = v \text{ in } \Omega_2.$$

Then for any $v \in V_{h,2}$, $q \in M_{h,2}$, we have

$$\begin{aligned} & \frac{1}{R_e} a_2(u_{h,2}, v) + b_2(u_{h,2}, u_{h,2}, v) + c_2(v, p_{h,2}) \\ = & \frac{1}{R_e} a(u_h, \tilde{v}) + b(u_h, u_h, \tilde{v}) + c(\tilde{v}, p_h) \\ & - \frac{1}{R_e} a_1(u_{h,1}, \rho_{h,1}\gamma_0 v) - b_1(u_{h,1}, u_{h,1}, \rho_{h,1}\gamma_0 v) - c_1(\rho_{h,1}\gamma_0 v, p_{h,1}) \\ = & (f, v)_2 + (f, \rho_{h,1}\gamma_0 v)_1 \\ & - \frac{1}{R_e} a_1(u_{h,1}, \rho_{h,1}\gamma_0 v) - b_1(u_{h,1}, u_{h,1}, \rho_{h,1}\gamma_0 v) - c_1(\rho_{h,1}\gamma_0 v, p_{h,1}), \end{aligned}$$

and

$$c_2(u_{h,2}, q) = c(u_h, \tilde{q}),$$

where \tilde{q} is defined by

$$\tilde{q} = 0 \text{ in } \Omega_1, \quad \tilde{q} = q \text{ in } \Omega_2.$$

Although $\tilde{q} \notin L_0^2(\Omega)$, we still have $c_2(u_{h,2}, \tilde{q}) = 0$, because

$$c(u_h, q) = 0, \quad \forall q \in M_h,$$

here M_h is the finite element space which is no the restriction $\int_{\Omega} q_h dx = 0$ (cf. [17] for details).

Conversely, suppose $(u_{h,1}, p_{h,1})$ and $(u_{h,2}, p_{h,2})$ are the solutions of (2.9)–(2.13). Define (u_h, p_h) as follows:

$$\begin{aligned} u_h &= u_{h,1} \text{ in } \Omega_1, \quad u_h = u_{h,2} \text{ in } \Omega_2; \\ p_h &= p_{h,1} \text{ in } \Omega_1, \quad p_h = p_{h,2} \text{ in } \Omega_2. \end{aligned}$$

We now prove that (u_h, p_h) is the solution of (2.6). In fact, for any $v_h \in V_h$, define $v_{h,k} = v|_{\Omega_k}$ ($k = 1, 2$) and $v_{h,1}^0 = v_{h,1} - \rho_{h,1}\gamma_0 v_{h,1} = v_{h,1} - \rho_{h,1}\gamma_0 v_{h,2}$. Then

$$\begin{aligned} & \frac{1}{R_e} a(u_h, v_h) + b(u_h, u_h, v_h) + c(v_h, p_h) = \frac{1}{R_e} a_1(u_{h,1}, v_{h,1}) + b_1(u_{h,1}, u_{h,1}, v_{h,1}) + c_1(v_{h,1}, p_{h,1}) \\ & + \frac{1}{R_e} a_2(u_{h,2}, v_{h,2}) + b_2(u_{h,2}, u_{h,2}, v_{h,2}) + c_2(v_{h,2}, p_{h,2}) \\ = & \frac{1}{R_e} a_1(u_{h,1}, v_{h,1}^0) + b_1(u_{h,1}, u_{h,1}, v_{h,1}^0) + c_1(v_{h,1}^0, p_{h,1}) \\ & + \frac{1}{R_e} a_1(u_{h,1}, \rho_{h,1}\gamma_0 v_{h,2}) + b_1(u_{h,1}, u_{h,1}, \rho_{h,1}\gamma_0 v_{h,2}) + c_1(\rho_{h,1}\gamma_0 v_{h,2}, p_{h,1}) \\ & + \frac{1}{R_e} a_2(u_{h,2}, v_{h,2}) + b_2(u_{h,2}, u_{h,2}, v_{h,2}) + c_2(v_{h,2}, p_{h,2}) \\ = & (f, v_{h,1}^0)_1 + (f, \rho_{h,1}\gamma_0 v_{h,2})_1 + (f, v_{h,2})_2 \\ = & (f, v_h). \end{aligned}$$

On the other hand, for any $q_h = q_{h,1} + q_{h,2} \in M_h$ with $q_{h,k} \in M_{h,k}$, using the same argument as the Lemma 5.3.9 in [17], we can get

$$c(u_h, q_h) = c_1(u_{h,1}, q_{h,1}) + c_2(u_{h,2}, q_{h,2}) = 0.$$

We have proved Lemma 2.1. □

3. THE DIRICHLET-NEUMANN ITERATIVE ALGORITHM

In order to define our DDM algorithm, we first analyze a property of the trace on Γ of the discrete solution u_h . Note

$$\int_{\Gamma} u_h|_{\Gamma} \cdot n ds = \int_{\partial\Omega_2} u_h|_{\Gamma} \cdot n ds = \int_{\Omega_2} \nabla \cdot u_h dx = 0,$$

where n denotes the unit normal vector of the boundary $\partial\Omega_2$. Therefore, we introduce the following trace space

$$\hat{\Phi}_h = \{\eta_h \in \Phi_h \mid \int_{\Gamma} \eta_h \cdot n ds = 0\}.$$

We now propose our two-subdomain decomposition method to solve equation (2.6).

For any $g_h^0 \in \hat{\Phi}_h$, define the two sequences $(u_{h,1}^n, p_{h,1}^n) \in V_{h,1} \times M_{h,1}$ and $(u_{h,2}^n, p_{h,2}^n) \in V_{h,2} \times M_{h,2}$ as follows:

$$\begin{cases} \frac{1}{R_e} a_1(u_{h,1}^n, v) + b_1(u_{h,1}^{n-1}, u_{h,1}^n, v) + c_1(v, p_{h,1}^n) &= (f, v)_1, \quad \forall v \in V_{h,1}^0 \\ c_1(u_{h,1}^n, q) &= 0, \quad \forall q \in M_{h,1} \cap L_0^2(\Omega_1) \\ \gamma_0 u_{h,1}^n &= g_h^{n-1}, \quad \text{on } \Gamma, \\ \int_{\Omega_1} p_{h,1}^n dx &= - \int_{\Omega_2} p_{h,2}^{n-1} dx, \end{cases} \tag{3.1}$$

and

$$\begin{cases} \frac{1}{R_e} a_2(u_{h,2}^n, v) + b_2(u_{h,2}^{n-1}, u_{h,2}^n, v) + c_2(v, p_{h,2}^n) &= (f, v)_2 + (f, \rho_{h,1} \gamma_0 v)_1 \\ &\quad - \frac{1}{R_e} a_1(u_{h,1}^n, \rho_{h,1} \gamma_0 v) \\ &\quad - b_1(u_{h,1}^{n-1}, u_{h,1}^n, \rho_{h,1} \gamma_0 v) \\ &\quad - c_1(\rho_{h,1} \gamma_0 v, p_{h,1}^n), \quad \forall v \in V_{h,2} \\ c_2(u_{h,2}^n, q) &= 0, \quad \forall q \in M_{h,2}, \end{cases} \tag{3.2}$$

where we have set

$$g_h^n = \theta_n \gamma_0 u_{h,2}^n + (1 - \theta_n) g_h^{n-1},$$

where $\theta_n < 1$ are positive numbers to be fixed later on.

Remark 3.1. For each $n \geq 1$, (3.1) and (3.2) are finite element approximations to the N-S equations with non-homogeneous boundary conditions. In this case, the inf-sup condition (2.5) is still satisfied on each subdomain. This ensures that both subproblems (3.1) and (3.2) have a unique solution.

We now consider the convergence rate of the iterative algorithm (3.1)–(3.2). The main theorem is that the iterations converge to the exact solution geometrically, with the rate independent of h . We shall develop six lemmas before stating and proving the main theorem. These lemmas contain the basic estimates which are needed in the proof of the main theorem. From (3.1)–(3.2), we can derive the following error equations for $\xi_{h,k}^n = u_{h,k}^n - u_{h,k} \in V_{h,k}$ and $\eta_{h,k}^n = p_{h,k}^n - p_{h,k} \in M_{h,k}$.

$$\begin{cases} \frac{1}{R_e} a_1(\xi_{h,1}^n, v) + c_1(v, \eta_{h,1}^n) &= -b_1(u_{h,1}^{n-1}, u_{h,1}^n, v) + b_1(u_{h,1}, u_{h,1}, v), \quad \forall v \in V_{h,1}^0 \\ c_1(\xi_{h,1}^n, q) &= 0, \quad \forall q \in M_{h,1} \cap L_0^2(\Omega) \\ \gamma_0 \xi_{h,1}^n &= g_h^{n-1} - u_{h,2}|_{\Gamma}, \quad \text{on } \Gamma, \\ \int_{\Omega_1} \eta_{h,1}^n dx &= - \int_{\Omega_2} \eta_{h,2}^{n-1} dx, \end{cases} \tag{3.3}$$

and

$$\begin{cases} \frac{1}{Re}a_2(\xi_{h,2}^n, v) + c_2(v, \eta_{h,2}^n) &= -b_2(u_{h,2}^{n-1}, u_{h,2}^n, v) + b_2(u_{h,2}, u_{h,2}, v) \\ &- \frac{1}{Re}a_1(\xi_{h,1}^n, \rho_{h,1}\gamma_0 v) - c_1(\rho_{h,1}\gamma_0 v, \eta_{h,1}^n) \\ &- b_1(u_{h,1}^{n-1}, u_{h,1}^n, \rho_{h,1}\gamma_0 v) + b_1(u_{h,1}, u_{h,1}, \rho_{h,1}\gamma_0 v), \quad \forall v \in V_{h,2} \\ c_2(\xi_{h,2}^n, q) &= 0, \quad \forall q \in M_{h,2}. \end{cases} \tag{3.4}$$

In addition, we have

$$\gamma_0 \xi_{h,1}^{n+1} = \theta_n \gamma_0 \xi_{h,2}^n + (1 - \theta_n) \gamma_0 \xi_{h,1}^n. \tag{3.5}$$

Problem (3.3) can be further split into two subproblems: find $\xi_{h,1*}^n \in V_{h,1}$, $\eta_{h,1*}^n \in M_{h,1}$ such that

$$\begin{cases} \frac{1}{Re}a_1(\xi_{h,1*}^n, v) + c_1(v, \eta_{h,1*}^n) &= 0, \quad \forall v \in V_{h,1}^0 \\ c_1(\xi_{h,1*}^n, q) &= 0, \quad \forall q \in M_{h,1} \cap L_0^2(\Omega_1) \\ \gamma_0 \xi_{h,1*}^n &= \gamma_0 \xi_{h,1}^n, \quad \text{on } \Gamma, \\ \int_{\Omega_1} \eta_{h,1*}^n dx &= - \int_{\Omega_2} \eta_{h,2}^{n-1} dx, \end{cases} \tag{3.6}$$

and find $\xi_{h,1**}^n \in V_{h,1}^0$, $\eta_{h,1**}^n \in M_{h,1} \cap L_0^2(\Omega_1)$ such that

$$\begin{cases} \frac{1}{Re}a_1(\xi_{h,1**}^n, v) + c_1(v, \eta_{h,1**}^n) &= -b_1(u_{h,1}^{n-1}, u_{h,1}^n, v) + b_1(u_{h,1}, u_{h,1}, v), \quad \forall v \in V_{h,1}^0 \\ c_1(\xi_{h,1**}^n, q) &= 0, \quad \forall q \in M_{h,1} \cap L_0^2(\Omega_1) \\ \gamma_0 \xi_{h,1**}^n &= 0, \quad \text{on } \Gamma. \end{cases} \tag{3.7}$$

It is easy to see that

$$\begin{cases} \xi_{h,1}^n = \xi_{h,1*}^n + \xi_{h,1**}^n \\ \eta_{h,1}^n = \eta_{h,1*}^n + \eta_{h,1**}^n. \end{cases}$$

We are now ready to state and prove the first lemma.

Lemma 3.1.

- (1) $\|\xi_{h,1}^n\|_1^2 = \|\xi_{h,1*}^n\|_1^2 + \|\xi_{h,1**}^n\|_1^2,$
- (2) $\|\xi_{h,1**}^n\|_1 \leq CR_e G_1^n,$

where $G_1^n \hat{=} (\|\xi_{h,1}^{n-1}\|_1 + \|u_{h,1}\|_1)\|\xi_{h,1}^n\|_1 + \|u_{h,1}\|_1\|\xi_{h,1}^{n-1}\|_1.$

Proof. Because $\xi_{h,1**}^n \in V_{h,1}^0$, we take $v = \xi_{h,1**}^n$ in (3.6) and obtain

$$\frac{1}{Re}a_1(\xi_{h,1*}^n, \xi_{h,1**}^n) + c_1(\xi_{h,1**}^n, \eta_{h,1*}^n) = 0.$$

Using the fact

$$c_1(\xi_{h,1**}^n, \eta_{h,1*}^n) = 0,$$

we get

$$a_1(\xi_{h,1*}^n, \xi_{h,1**}^n) = 0.$$

Finally,

$$\begin{aligned} \|\xi_{h,1}^n\|_1^2 &= \|\xi_{h,1*}^n + \xi_{h,1**}^n\|_1^2 \\ &= \|\xi_{h,1*}^n\|_1^2 + \|\xi_{h,1**}^n\|_1^2 + 2a_1(\xi_{h,1*}^n, \xi_{h,1**}^n) \\ &= \|\xi_{h,1*}^n\|_1^2 + \|\xi_{h,1**}^n\|_1^2, \end{aligned}$$

which is equation (1) in Lemma 3.1.

We now prove (2) of Lemma 3.1. Taking $v = \xi_{h,1**}^n$ in (3.7), we have

$$\begin{aligned} \frac{1}{R_e} a_1(\xi_{h,1**}^n, \xi_{h,1**}^n) &= -b_1(u_{h,1}^{n-1}, u_{h,1}^n, \xi_{h,1**}^n) + b_1(u_{h,1}, u_{h,1}, \xi_{h,1**}^n) \\ &= -b_1(\xi_{h,1}^{n-1}, \xi_{h,1}^n, \xi_{h,1**}^n) - b_1(\xi_{h,1}^{n-1}, u_{h,1}, \xi_{h,1**}^n) \\ &\quad - b_1(u_{h,1}, \xi_{h,1}^n, \xi_{h,1**}^n). \end{aligned}$$

Then we have

$$\|\xi_{h,1**}^n\|_1^2 \leq CR_e [(\|\xi_{h,1}^{n-1}\|_1 + \|u_{h,1}\|_1)\|\xi_{h,1}^n\|_1 + \|u_{h,1}\|_1\|\xi_{h,1}^{n-1}\|_1],$$

which implies (2) of Lemma 3.1. □

Next we introduce two Stokes extension operators which were first proposed in [16]. For any $\psi \in \hat{\Phi}_h$, define $(E_{h,k}\psi, P_{h,k}\psi) \in V_{h,k} \times M_{h,k}$ as follows:

$$\begin{cases} \frac{1}{R_e} a_k(E_{h,k}\psi, v) + c_k(v, P_{h,k}\psi) = 0, & \forall v \in V_{h,k}^0, \\ c_k(E_{h,k}\psi, q) = 0, & \forall q \in M_{h,k}, \\ \gamma_0 E_{h,k}\psi = \psi. \end{cases} \tag{3.8}$$

Remark 3.2. To ensure that the above Stokes subproblem on Ω_2 has a unique solution, we assume that the function $q \in M_{h,2}$ satisfies $\bar{q} = 0$, where

$$\bar{q} \hat{=} \frac{1}{|\Omega_2|} \int_{\Omega_2} q dx.$$

Note that for any $q \in M_{h,2}$ which does not satisfy the above property, we still have

$$c_2(E_{h,2}\psi, q) = c_2(E_{h,2}\psi, q - \bar{q}) + c_2(E_{h,2}\psi, \bar{q}) = -\bar{q} \int_{\Gamma} \psi \cdot n ds = 0,$$

as $\psi \in \hat{\Phi}_h$.

Lemma 3.2. [16] For any $\psi \in \hat{\Phi}_h$,

- (1) $a_1(E_{h,1}\psi, E_{h,1}\psi) \leq \sigma a_2(E_{h,2}\psi, E_{h,2}\psi)$,
- (2) $a_2(E_{h,2}\psi, E_{h,2}\psi) \leq \tau a_1(E_{h,1}\psi, E_{h,1}\psi)$,

where σ, τ are constants independent of the mesh size h .

The next lemma shows that the algorithm is independent of the choice of the extension operator $\rho_{h,k}$. While the trivial extension may be more convenient in practice, $E_{h,k}$ may be more convenient theoretically. Both choices lead to the same algorithm.

Lemma 3.3. The first formula in (3.4) is equivalent to

$$\begin{aligned} \frac{1}{R_e} a_2(\xi_{h,2}^n, v) + c_2(v, \eta_{h,2}^n) &= -b_2(u_{h,2}^{n-1}, u_{h,2}^n, v) + b_2(u_{h,2}, u_{h,2}, v) \\ &\quad - \frac{1}{R_e} a_1(\xi_{h,1}^n, E_{h,1}\gamma_0 v) - c_1(E_{h,1}\gamma_0 v, \eta_{h,1}^n) \\ &\quad - b_1(u_{h,1}^{n-1}, u_{h,1}^n, E_{h,1}\gamma_0 v) + b_1(u_{h,1}, u_{h,1}, E_{h,1}\gamma_0 v), \quad \forall v \in V_{h,2}. \end{aligned} \tag{3.9}$$

Proof. For any $v \in V_{h,2}$, because $E_{h,1}\gamma_0 v - \rho_{h,1}\gamma_0 v \in V_{h,1}^0$, we have, by (3.3),

$$\begin{aligned} 0 &= \frac{1}{R_e} a_1(\xi_{h,1}^n, E_{h,1}\gamma_0 v - \rho_{h,1}\gamma_0 v) + b_1(u_{h,1}^{n-1}, u_{h,1}^n, E_{h,1}\gamma_0 v - \rho_{h,1}\gamma_0 v) \\ &\quad - b_1(u_{h,1}, u_{h,1}, E_{h,1}\gamma_0 v - \rho_{h,1}\gamma_0 v) + c_1(E_{h,1}\gamma_0 v - \rho_{h,1}\gamma_0 v, \eta_{h,1}^n). \end{aligned}$$

That is,

$$\begin{aligned} \frac{1}{R_e} a_1(\xi_{h,1}^n, \rho_{h,1}\gamma_0 v) + b_1(u_{h,1}^{n-1}, u_{h,1}^n, \rho_{h,1}\gamma_0 v) \\ - b_1(u_{h,1}, u_{h,1}, \rho_{h,1}\gamma_0 v) + c_1(\rho_{h,1}\gamma_0 v, \eta_{h,1}^n) \\ = \frac{1}{R_e} a_1(\xi_{h,1}^n, E_{h,1}\gamma_0 v) + b_1(u_{h,1}^{n-1}, u_{h,1}^n, E_{h,1}\gamma_0 v) \\ - b_1(u_{h,1}, u_{h,1}, E_{h,1}\gamma_0 v) + c_1(E_{h,1}\gamma_0 v, \eta_{h,1}^n), \end{aligned}$$

which, together with (3.4), yields Lemma 3.3. \square

Lemma 3.4.

$$\|E_{h,2}\gamma_0 \xi_{h,2}^n\|_2 \leq \|\xi_{h,2}^n\|_2 + CR_e G_2^n,$$

where $G_2^n = (\|\xi_{h,2}^{n-1}\|_2 + \|u_{h,2}\|_2)\|\xi_{h,2}^n\|_2 + \|u_{h,2}\|_2\|\xi_{h,2}^{n-1}\|_2$.

Proof. Taking $v \in V_{h,2}^0$ in (3.4), we get

$$\frac{1}{R_e} a_2(\xi_{h,2}^n, v) + c_2(v, \eta_{h,2}^n) = -b_2(u_{h,2}^{n-1}, u_{h,2}^n, v) + b_2(u_{h,2}, u_{h,2}, v). \quad (3.10)$$

On the other hand, based on the definition of the extension operators $E_{h,2}$, $P_{h,2}$, we have

$$\frac{1}{R_e} a_2(E_{h,2}\gamma_0 \xi_{h,2}^n, v) + c_2(v, P_{h,2}\gamma_0 \xi_{h,2}^n) = 0, \quad \forall v \in V_{h,2}^0. \quad (3.11)$$

Combining the above two equalities, we have

$$\frac{1}{R_e} a_2(\xi_{h,2}^n - E_{h,2}\gamma_0 \xi_{h,2}^n, v) + c_2(v, \eta_{h,2}^n - P_{h,2}\gamma_0 \xi_{h,2}^n) = -b_2(u_{h,2}^{n-1}, u_{h,2}^n, v) + b_2(u_{h,2}, u_{h,2}, v).$$

Taking $v = \xi_{h,2}^n - E_{h,2}\gamma_0 \xi_{h,2}^n$ in the above inequality, and noting the fact

$$c_2(\xi_{h,2}^n - E_{h,2}\gamma_0 \xi_{h,2}^n, q) = 0, \quad \forall q \in M_{h,2},$$

we have

$$\begin{aligned} \|\xi_{h,2}^n - E_{h,2}\gamma_0 \xi_{h,2}^n\|_2^2 &= -R_e b_2(u_{h,2}^{n-1}, u_{h,2}^n, \xi_{h,2}^n - E_{h,2}\gamma_0 \xi_{h,2}^n) + R_e b_2(u_{h,2}, u_{h,2}, \xi_{h,2}^n - E_{h,2}\gamma_0 \xi_{h,2}^n) \\ &= -R_e b_2(\xi_{h,2}^{n-1}, \xi_{h,2}^n, \xi_{h,2}^n - E_{h,2}\gamma_0 \xi_{h,2}^n) - R_e b_2(\xi_{h,2}^{n-1}, u_{h,2}, \xi_{h,2}^n - E_{h,2}\gamma_0 \xi_{h,2}^n) \\ &\quad - R_e b_2(u_{h,2}, \xi_{h,2}^n, \xi_{h,2}^n - E_{h,2}\gamma_0 \xi_{h,2}^n) \\ &\leq CR_e [(\|\xi_{h,2}^{n-1}\|_2 + \|u_{h,2}\|_2)\|\xi_{h,2}^n\|_2 + \|u_{h,2}\|_2\|\xi_{h,2}^{n-1}\|_2] \|\xi_{h,2}^n - E_{h,2}\gamma_0 \xi_{h,2}^n\|_2. \end{aligned}$$

Then

$$\|\xi_{h,2}^n - E_{h,2}\gamma_0 \xi_{h,2}^n\|_2 \leq CR_e (\|\xi_{h,2}^{n-1}\|_2 + \|u_{h,2}\|_2) \|\xi_{h,2}^n\|_2 + \|u_{h,2}\|_2 \|\xi_{h,2}^{n-1}\|_2,$$

which, together with the triangle inequality, yields

$$\begin{aligned} \|E_{h,2}\gamma_0\xi_{h,2}^n\|_2 &\leq \|\xi_{h,2}^n\|_2 + \|\xi_{h,2}^n - E_{h,2}\gamma_0\xi_{h,2}^n\|_2 \\ &\leq \|\xi_{h,2}^n\|_2 + CR_e[(\|\xi_{h,2}^{n-1}\|_2 + \|u_{h,2}\|_2)\|\xi_{h,2}^n\|_2 + \|u_{h,2}\|_2\|\xi_{h,2}^{n-1}\|_2]. \end{aligned}$$

This completes the proof of Lemma 3.4. □

Lemma 3.5. *Let $\varepsilon = CR_e$, then*

$$-\|\xi_{h,2}^n\|_2^2 \leq -\frac{1}{3\tau}\|\xi_{h,1}^n\|_1^2 + \varepsilon^2(G_2^n)^2 + \frac{4}{\tau}\varepsilon^2(G_1^n)^2.$$

Proof. Taking $v = E_{h,2}\gamma_0\xi_{h,1}^n$ in (3.9), we have

$$\begin{aligned} \frac{1}{R_e}a_2(\xi_{h,2}^n, E_{h,2}\gamma_0\xi_{h,1}^n) &= -b_2(u_{h,2}^{n-1}, u_{h,2}^n, E_{h,2}\gamma_0\xi_{h,1}^n) + b_2(u_{h,2}, u_{h,2}, E_{h,2}\gamma_0\xi_{h,1}^n) - \frac{1}{R_e}a_1(\xi_{h,1}^n, \xi_{h,1*}^n) \\ &\quad - b_1(u_{h,1}^{n-1}, u_{h,1}^n, \xi_{h,1*}^n) + b_1(u_{h,1}, u_{h,1}, \xi_{h,1*}^n). \end{aligned}$$

In the above, we have used the fact

$$E_{h,1}\gamma_0\xi_{h,1}^n = \xi_{h,1*}^n.$$

Then

$$\begin{aligned} a_1(\xi_{h,1}^n, \xi_{h,1}^n) &= a_1(\xi_{h,1}^n, \xi_{h,1**}^n) - a_2(\xi_{h,2}^n, E_{h,2}\gamma_0\xi_{h,1}^n) \\ &\quad - R_e b_2(u_{h,2}^{n-1}, u_{h,2}^n, E_{h,2}\gamma_0\xi_{h,1}^n) + R_e b_2(u_{h,2}, u_{h,2}, E_{h,2}\gamma_0\xi_{h,1}^n) \\ &\quad - R_e b_1(u_{h,1}^{n-1}, u_{h,1}^n, \xi_{h,1*}^n) + R_e b_1(u_{h,1}, u_{h,1}, \xi_{h,1*}^n). \end{aligned}$$

By Lemmas 3.1 and 3.2, we get

$$\begin{aligned} \|\xi_{h,1}^n\|_1^2 &\leq \|\xi_{h,2}^n\|_2 \|E_{h,2}\gamma_0\xi_{h,1}^n\|_2 + \|\xi_{h,1}^n\|_1 \|\xi_{h,1**}^n\|_1 + \varepsilon G_2^n \|E_{h,2}\gamma_0\xi_{h,1}^n\|_2 + \varepsilon G_1^n \|\xi_{h,1*}^n\|_1 \\ &\leq \tau^{\frac{1}{2}} \|\xi_{h,2}^n\|_2 \|\xi_{h,1*}^n\|_1 + \|\xi_{h,1}^n\|_1 \|\xi_{h,1**}^n\|_1 + \tau^{\frac{1}{2}} \varepsilon G_2^n \|\xi_{h,1*}^n\|_1 + \varepsilon G_1^n \|\xi_{h,1*}^n\|_1 \\ &\leq \tau^{\frac{1}{2}} \|\xi_{h,2}^n\|_2 \|\xi_{h,1}^n\|_1 + \tau^{\frac{1}{2}} \varepsilon G_2^n \|\xi_{h,1}^n\|_1 + 2\varepsilon G_1^n \|\xi_{h,1}^n\|_1. \end{aligned}$$

Then

$$\|\xi_{h,1}^n\|_1 \leq \tau^{\frac{1}{2}} \|\xi_{h,2}^n\|_2 + \tau^{\frac{1}{2}} \varepsilon G_2^n + 2\varepsilon G_1^n.$$

So

$$\|\xi_{h,1}^n\|_1^2 \leq 3\tau \|\xi_{h,2}^n\|_2^2 + 3\tau(G_2^n)^2 + 12\varepsilon^2(G_1^n)^2,$$

which implies Lemma 3.5. □

Lemma 3.6. *Provided R_e is sufficiently small, then for every $n \geq 1$,*

$$\|\xi_{h,1}^n\|_1 \leq M, \quad \|\xi_{h,2}^n\|_2 \leq 2\sigma^{\frac{1}{2}} \|\xi_{h,1}^n\|_1 \leq 2\sigma^{\frac{1}{2}} M,$$

where $M = \max\{\|\xi_{h,1}^0\|_1, \|\xi_{h,1}^1\|_1\}$.

Proof. We show this lemma by induction. Assume that $\|\xi_{h,1}^n\|_1 \leq M$, we now prove that $\|\xi_{h,1}^{n+1}\|_1 \leq M$. In the first step, we show that if $\|\xi_{h,1}^n\|_1 \leq M$, then $\|\xi_{h,2}^n\|_2 \leq 2\sigma^{\frac{1}{2}}M$ ($n \geq 1$). We will prove this assertion also by induction.

Taking $v = \xi_{h,2}^n$ in (3.9), we have

$$\begin{aligned} a_2(\xi_{h,2}^n, \xi_{h,2}^n) &= -a_1(\xi_{h,1}^n, E_{h,1}\gamma_0\xi_{h,2}^n) \\ &\quad -R_e b_2(u_{h,2}^{n-1}, u_{h,2}^n, \xi_{h,2}^n) + R_e b_2(u_{h,2}, u_{h,2}, \xi_{h,2}^n) \\ &\quad -R_e b_1(u_{h,1}^{n-1}, u_{h,1}^n, E_{h,1}\gamma_0\xi_{h,2}^n) + R_e b_1(u_{h,1}, u_{h,1}, E_{h,1}\gamma_0\xi_{h,2}^n). \end{aligned} \quad (3.12)$$

Then

$$\|\xi_{h,2}^n\|_2^2 \leq \|\xi_{h,1}^n\|_1 \|E_{h,1}\gamma_0\xi_{h,2}^n\|_1 + \varepsilon G_2^n \|\xi_{h,2}^n\|_2 + \varepsilon G_1^n \|E_{h,1}\gamma_0\xi_{h,2}^n\|_1.$$

On the other hand, using Lemma 3.4,

$$\|E_{h,1}\gamma_0\xi_{h,2}^n\|_1 \leq \sigma^{\frac{1}{2}} \|E_{h,2}\gamma_0\xi_{h,2}^n\|_2 \leq \sigma^{\frac{1}{2}} \|\xi_{h,2}^n\|_2 + \sigma^{\frac{1}{2}} \varepsilon G_2^n.$$

So combining the above two inequalities, we get

$$\|\xi_{h,2}^n\|_2 \leq \sigma^{\frac{1}{2}} \|\xi_{h,1}^n\|_1 \|\xi_{h,2}^n\|_2 + \varepsilon \sigma^{\frac{1}{2}} G_2^n \|\xi_{h,1}^n\|_1 + \varepsilon G_2^n \|\xi_{h,2}^n\|_2 + \varepsilon \sigma^{\frac{1}{2}} G_1^n \|\xi_{h,2}^n\|_2 + \varepsilon^2 \sigma^{\frac{1}{2}} G_1^n G_2^n. \quad (3.13)$$

When $n = 1$, then

$$\|\xi_{h,2}^1\|_2^2 \leq \sigma^{\frac{1}{2}} M \|\xi_{h,2}^1\|_2 + \varepsilon \sigma^{\frac{1}{2}} G_2^1 M + \varepsilon G_2^1 \|\xi_{h,2}^1\|_2 + \varepsilon \sigma^{\frac{1}{2}} G_1 \|\xi_{h,2}^1\|_2 + \varepsilon^2 G_1^1 G_2^1 \sigma^{\frac{1}{2}}.$$

It is easy to see that

$$\begin{aligned} G_1^1 &\leq (M + C^{-1}\varepsilon\|f\|_{-1})M + MC^{-1}\varepsilon\|f\|_{-1}, \\ G_2^1 &\leq (N + C^{-1}\varepsilon\|f\|_{-1})\|\xi_{h,2}^1\|_2 + NC^{-1}\varepsilon\|f\|_{-1}, \end{aligned}$$

where $N = \|\xi_{h,2}^0\|_2$.

Combining above three inequalities, and by simple manipulation, we can achieve

$$(1 - O(\varepsilon))\|\xi_{h,2}^1\|_2^2 \leq (\sigma^{\frac{1}{2}}M + O(\varepsilon))\|\xi_{h,2}^1\|_2 + O(\varepsilon).$$

When $\varepsilon \rightarrow 0$, simple calculation can yields

$$\|\xi_{h,2}^1\|_2 \leq 2\sigma^{\frac{1}{2}}M.$$

Assume the assertion holds for $n - 1$, we then have

$$\begin{aligned} G_1^n &\leq (M + C^{-1}\varepsilon\|f\|_{-1})M + MC^{-1}\varepsilon\|f\|_{-1}, \\ G_2^n &\leq (2\sigma^{\frac{1}{2}}M + C^{-1}\varepsilon\|f\|_{-1})\|\xi_{h,2}^1\|_2 + 2\sigma^{\frac{1}{2}}MC^{-1}\varepsilon\|f\|_{-1}, \end{aligned}$$

By (3.13), we have

$$(1 - O(\varepsilon))\|\xi_{h,2}^n\|_2^2 \leq (\sigma^{\frac{1}{2}}M + O(\varepsilon))\|\xi_{h,2}^n\|_2 + O(\varepsilon).$$

When $\varepsilon \rightarrow 0$, simple calculation can yields

$$\|\xi_{h,2}^n\|_2 \leq 2\sigma^{\frac{1}{2}}M.$$

We now prove that if $\|\xi_{h,1}^n\|_1 \leq M$, then $\|\xi_{h,1}^{n+1}\|_1 \leq M$. From (3.5), we have

$$\|\xi_{h,1*}^{n+1}\|_1^2 = \theta_n^2 \|E_{h,1}\gamma_0 \xi_{h,2}^n\|_1^2 + (1 - \theta_n)^2 \|\xi_{h,1*}^n\|_1^2 + 2\theta_n(1 - \theta_n)a_1(E_{h,1}\gamma_0 \xi_{h,2}^n, \xi_{h,1*}^n).$$

Note that $\theta_n(1 - \theta_n) \leq \frac{1}{4}$. On the other hand, by Lemma 3.4,

$$\begin{aligned} \|E_{h,1}\gamma_0 \xi_{h,2}^n\|_1^2 &\leq \sigma \|E_{h,2}\gamma_0 \xi_{h,2}^n\|_2^2 \\ &\leq \sigma \|\xi_{h,2}^n\|_2^2 + \varepsilon^2 \sigma (G_2^n)^2 + 2\varepsilon \sigma G_2^n. \end{aligned}$$

By (3.12), we know that

$$\begin{aligned} a_1(\xi_{h,1*}^n, E_{h,1}\gamma_0 \xi_{h,2}^n) &= -a_2(\xi_{h,2}^n, \xi_{h,2}^n) - a_1(\xi_{h,1**}^n, E_{h,1}\gamma_0 \xi_{h,2}^n) \\ &\quad - R_e b_2(u_{h,2}^{n-1}, u_{h,2}^n, \xi_{h,2}^n) + R_e b_2(u_{h,2}, u_{h,2}, \xi_{h,2}^n) \\ &\quad - R_e b_1(u_{h,2}^{n-1}, u_{h,1}^n, E_{h,1}\gamma_0 \xi_{h,2}^n) + R_e b_1(u_{h,1}, u_{h,1}, E_{h,1}\gamma_0 \xi_{h,2}^n). \end{aligned}$$

Combining above three results, we can derive that

$$\begin{aligned} \|\xi_{h,1*}^{n+1}\|_1^2 &\leq \sigma \theta_n^2 \|\xi_{h,2}^n\|_2^2 + (1 - \theta_n)^2 \|\xi_{h,1*}^n\|_1^2 - 2\theta_n(1 - \theta_n) \|\xi_{h,2}^n\|_2^2 \\ &\quad + \varepsilon^2 \theta_n^2 \sigma (G_2^n)^2 + 2\varepsilon \sigma \theta_n^2 G_2^n \|\xi_{h,2}^n\|_2 \\ &\quad - 2\theta_n(1 - \theta_n)[a_1(\xi_{h,1**}^n, E_{h,1}\gamma_0 \xi_{h,2}^n) \\ &\quad + R_e b_2(u_{h,2}^{n-1}, u_{h,2}^n, \xi_{h,2}^n) - R_e b_2(u_{h,2}, u_{h,2}, \xi_{h,2}^n) \\ &\quad + R_e b_1(u_{h,1}^{n-1}, u_{h,1}^n, E_{h,1}\gamma_0 \xi_{h,2}^n) - R_e b_1(u_{h,1}, u_{h,1}, E_{h,1}\gamma_0 \xi_{h,2}^n)] \\ &\leq \left(4\sigma^2 \theta_n^2 + (1 - \theta_n)^2 - \frac{2\theta_n(1 - \theta_n)}{3\tau}\right) \|\xi_{h,1}^n\|_1^2 \\ &\quad + \frac{1}{2} \|\xi_{h,1**}^n\|_1 \|E_{h,1}\gamma_0 \xi_{h,2}^n\|_1 \\ &\quad + \varepsilon G_2^n \|\xi_{h,2}^n\|_2 + \varepsilon G_1^n \|E_{h,1}\gamma_0 \xi_{h,2}^n\|_1. \end{aligned}$$

Using Lemmas 3.1, 3.2, 3.4 and 3.5 and the induction assumption, by elementary manipulation, we can obtain

$$\|\xi_{h,1*}^{n+1}\|_1 \leq K(\theta_n) \|\xi_{h,1}^n\|_1 + O(\varepsilon),$$

where $K(\theta_n) = (4\sigma^2 \theta_n^2 + (1 - \theta_n)^2 - \frac{2\theta_n(1 - \theta_n)}{3\tau})^{\frac{1}{2}}$.

By an elementary calculation, if

$$\frac{3\tau + 2}{12\sigma^2\tau + 3\tau + 2} \doteq \theta_* \leq \theta_n < \theta^* \doteq \min \left\{ \frac{6\tau + 2}{12\sigma^2\tau + 3\tau + 2}, 1 \right\},$$

then

$$0 < K(\theta_n) \leq d < 1.$$

So by Lemma 3.1, we finally get

$$\|\xi_{h,1}^{n+1}\|_1 \leq dM + O(\varepsilon) \|\xi_{h,1}^{n+1}\|_1 + O(\varepsilon).$$

Then

$$\|\xi_{h,1}^{n+1}\|_1 \leq \frac{d}{1 - O(\varepsilon)}M + O(\varepsilon).$$

When $\varepsilon \rightarrow 0$, we have

$$\|\xi_{h,1}^{n+1}\|_1 \leq M.$$

We have proved Lemma 3.6. □

Theorem 3.1. *Assume that R_e is sufficiently small and $\theta_n \in (\theta_*, \theta^*)$, then the D-N velocity sequence $\{u_{h,1}^n, u_{h,2}^n\}$ converges geometrically to the true solution $u_h = (u_{h,1}, u_{h,2})$.*

Proof. From the proof of Lemma 3.6, we know that if R_e is sufficiently small, then

$$\|\xi_{h,2}^n\|_2 \leq 2\sigma^{\frac{1}{2}}\|\xi_{h,1}^n\|_1. \tag{3.14}$$

Using the above inequality and the same arguments as in the proof of Lemma 3.6, we can prove that

$$\begin{aligned} \|\xi_{h,1}^{n+1}\|_1 &\leq d\|\xi_{h,1}^n\|_1 + O(\varepsilon) + \varepsilon(M + 2C^{-1}\varepsilon\|f\|_{-1})\|\xi_{h,1}^{n+1}\|_1 \\ &\leq (d + O(\varepsilon))\|\xi_{h,1}^n\|_1 + O(\varepsilon)\|\xi_{h,1}^{n+1}\|_1. \end{aligned}$$

Then

$$\|\xi_{h,1}^{n+1}\|_1 \leq \frac{d + O(\varepsilon)}{1 - O(\varepsilon)}\|\xi_{h,1}^n\|_1.$$

Based on the above inequality, we can easily see that if R_e is sufficiently small, then $\xi_{h,1}^n$ converges geometrically to zero. On the other hand, because of (3.13), we know that $\xi_{h,2}^n$ also converges geometrically to zero. □

Theorem 3.2. *Assume that R_e is sufficiently small and $\theta_n \in (\theta_*, \theta^*)$, then the D-N pressure sequence $\{p_{h,1}^n, p_{h,2}^n\}$ converges to the true solution $(p_{h,1}, p_{h,2})$.*

Proof. Let β_k ($k = 1, 2$) be the constant in the inf-sup condition (2.5) restricted to Ω_k . Using (3.3),

$$\begin{aligned} \|\eta_{h,1}^n\|_0 &\leq \beta_1 \sup_{v \in V_{h,1}} \frac{c_1(v, \eta_{h,1}^n)}{\|v\|_1} \\ &\leq \beta_1 \sup_{v \in V_{h,1}} \frac{|-\frac{1}{R_e}a_1(\xi_{h,1}^n, v) - b_1(u_{h,1}^{n-1}, u_{h,1}^n, v) + b_1(u_{h,1}, u_{h,1}, v)|}{\|v\|_1} \\ &\leq \beta_1 [R_e^{-1}\|\xi_{h,1}^n\|_1 + (\|\xi_{h,1}^{n-1}\|_1 + \|u_h\|)\|\xi_{h,1}^n\|_1 + \|\xi_{h,1}^{n-1}\|_1\|u_h\|] \\ &\leq \beta_1 [(R_e^{-1}M + C^{-1}\varepsilon\|f\|_{-1})\|\xi_{h,1}^n\|_1 + C^{-1}\varepsilon\|f\|_{-1}\|\xi_{h,1}^{n-1}\|_1] \end{aligned}$$

which means that $\eta_{h,1}^n$ converges to zero.

Similarly, based on (3.9), we have

$$\begin{aligned} \|\eta_{h,2}^n\|_0 &\leq \beta_2 \sup_{v \in V_{h,2}} \frac{c_2(v, \eta_{h,2}^n)}{\|v\|_2} \\ &\leq \beta_2 \sup_{v \in V_{h,2}} [R_e^{-1}a_2(\xi_{h,2}^n, v) - b_2(u_{h,2}^{n-1}, u_{h,2}^n, v) + b_2(u_{h,2}, u_{h,2}, v) \\ &\quad - R_e^{-1}a_1(\xi_{h,1}^n, E_{h,1}\gamma_0 v) - b_1(u_{h,1}^{n-1}, u_{h,1}^n, E_{h,1}\gamma_0 v) \\ &\quad + b_1(u_{h,1}, u_{h,1}, E_{h,1}\gamma_0 v)]/\|v\|_2 \\ &\leq \beta_2 \sup_{v \in V_{h,2}} [R_e^{-1}\|\xi_{h,2}^n\|_2\|v\|_2 + CG_2^n\|v\|_2 \\ &\quad + R_e^{-1}\|\xi_{h,1}^n\|_1\|E_{h,1}\gamma_0 v\|_1 + CG_1^n\|E_{h,1}\gamma_0 v\|_1]/\|v\|_2. \end{aligned}$$

Using a result in [16] and a trace inequality, we have

$$\|E_{h,1}\gamma_0 v\|_1 \leq C_3 \|\gamma_0 v\|_{H_{00}^{\frac{1}{2}}(\Gamma)} \leq C_3 C_4 \|v\|_2.$$

Combining the above two inequalities, we obtain

$$\begin{aligned} \|\eta_{h,2}^n\|_0 \leq & \beta_2 [(Re^{-1} + 2\sigma^{\frac{1}{2}}M + C^{-1}\varepsilon\|f\|_{-1}) \|\xi_{h,2}^n\|_2 + 2\sigma^{\frac{1}{2}}MC^{-1}\varepsilon\|f\|_{-1}\|\xi_{h,2}^{n-1}\|_2 \\ & + (Re^{-1}M + C^{-1}\varepsilon\|f\|_{-1})\|\xi_{h,1}^n\|_1 + C^{-1}\varepsilon\|f\|_{-1}\|\xi_{h,1}^{n-1}\|_1]. \end{aligned}$$

Again, this implies that $\eta_{h,2}^n$ converges geometrically to zero. □

4. OTHER DIRICHLET-NEUMANN ITERATIVE ALGORITHMS

In this section, we give other version of the D-N iterative algorithm where only linear Stokes need to be solved in each subdomain. Such kind of algorithm is obviously easier to implement.

Algorithm 4.1. For any $g_h^0 \in \hat{\Phi}_h$ and $u_{h,k}^0 \in V_{h,k}$, $k = 1, 2$, define the two sequences $(u_{h,1}^n, p_{h,1}^n) \in V_{h,1} \times M_{h,1}$ and $(u_{h,2}^n, p_{h,2}^n) \in V_{h,2} \times M_{h,2}$ as follows:

$$\left\{ \begin{array}{l} \frac{1}{Re} a_1(u_{h,1}^n, v) + c_1(v, p_{h,1}^n) = (f, v)_1 - b_1(u_{h,1}^{n-1}, u_{h,1}^{n-1}, v), \quad \forall v \in V_{h,1}^0 \\ c_1(u_{h,1}^n, q) = 0, \quad \forall q \in M_{h,1} \cap L_0^2(\Omega) \\ \gamma_0 u_{h,1}^n = g_h^{n-1}, \quad \text{on } \Gamma, \\ \int_{\Omega_1} p_{h,1}^n dx = \int_{\Omega_2} p_{h,2}^n dx \end{array} \right.$$

and

$$\left\{ \begin{array}{l} \frac{1}{Re} a_2(u_{h,2}^n, v) + c_2(v, p_{h,2}^n) = (f, v)_2 + (f, \rho_{h,1}\gamma_0 v)_1 - b_2(u_{h,2}^{n-1}, u_{h,2}^{n-1}, v) \\ \quad - \frac{1}{Re} a_1(u_{h,1}^n, \rho_{h,1}\gamma_0 v) - b_1(u_{h,1}^{n-1}, u_{h,1}^{n-1}, \rho_{h,1}\gamma_0 v) \\ \quad - c_1(\rho_{h,1}\gamma_0 v, p_{h,1}^n), \quad \forall v \in V_{h,2} \\ c_2(u_{h,2}^n, q) = 0, \quad \forall q \in M_{h,2}, \end{array} \right.$$

where we have set

$$g_h^n = \theta_n \gamma_0 u_{h,2}^n + (1 - \theta_n) g_h^{n-1}.$$

Similar to the previous section, we can prove

Lemma 4.1. Provided Re is sufficiently small, then for every $n \geq 1$,

$$\|\xi_{h,1}^n\|_1 \leq M, \quad \|\xi_{h,2}^n\|_2 \leq 3\sigma^{\frac{1}{2}}M,$$

where $M = \|\xi_{h,1}^1\|_1$.

Theorem 4.1. Assume that Re and θ_n are sufficiently small, then the linear D-N velocity sequence in Algorithm 4.1 $\{u_{h,1}^n, u_{h,2}^n\}$ converges to the true solution $u_h = (u_{h,1}, u_{h,2})$.

Proof. The proof is similar to before, we only give a skeleton of the proof.

Using a similar argument as in the proof of Lemma 3.6, we have

$$\|\xi_{h,1*}^{n+1}\|_1^2 \leq \sigma\theta_n^2 \|\xi_{h,2}^n\|_2^2 + (1 - \theta_n)^2 \|\xi_{h,1*}^n\|_1^2 - \frac{2\theta(1 - \theta_n)}{3\tau} \|\xi_{h,1}^n\|_1^2 + O(\varepsilon).$$

So

$$\begin{aligned} \|\xi_{h,1}^{n+1}\|_1^2 &= \|\xi_{h,1*}^{n+1}\|_1^2 + \|\xi_{h,1**}^{n+1}\|_1^2 \\ &\leq \sigma\theta_n^2\|\xi_{h,2}^n\|_1^2 + \delta\|\xi_{h,1}^n\|_1^2 + O(\varepsilon), \end{aligned}$$

where $\delta \hat{=} (1 - \theta_n)^2 - \frac{2\theta(1-\theta_n)}{3\tau}$.

On the other hand,

$$\begin{aligned} \|\xi_{h,2}^{n+1}\|_2^2 &\leq \|\xi_{h,1}^{n+1}\|_1\|E_{h,1}\gamma_0\xi_{h,2}^{n+1}\|_1 + O(\varepsilon) \\ &\leq \sigma^{\frac{1}{2}}\|\xi_{h,1}^{n+1}\|_1\|\xi_{h,2}^{n+1}\|_2 + O(\varepsilon) \\ &\leq \frac{\sigma}{2}\|\xi_{h,1}^{n+1}\|_1^2 + \frac{1}{2}\|\xi_{h,2}^{n+1}\|_2^2 + O(\varepsilon). \end{aligned}$$

Then,

$$\begin{aligned} \|\xi_{h,2}^{n+1}\|_2^2 &\leq \sigma\|\xi_{h,1}^{n+1}\|_1^2 + O(\varepsilon) \\ &\leq \sigma^2\theta_n^2\|\xi_{h,2}^n\|_1^2 + \sigma\delta\|\xi_{h,1}^n\|_1^2 + O(\varepsilon). \end{aligned}$$

Finally,

$$\begin{bmatrix} \|\xi_{h,1}^{n+1}\|_1^2 \\ \|\xi_{h,2}^{n+1}\|_2^2 \end{bmatrix} \leq \begin{bmatrix} \delta & \theta_n^2\sigma \\ \sigma\delta & \sigma^2\theta_n^2 \end{bmatrix} \begin{bmatrix} \|\xi_{h,1}^n\|_1^2 \\ \|\xi_{h,2}^n\|_2^2 \end{bmatrix} + O(\varepsilon) \begin{bmatrix} 1 \\ 1 \end{bmatrix}.$$

Now $\rho(A) = \delta + \sigma^2\theta_n^2 + o(1)$, as $\varepsilon \rightarrow 0$ where

$$A = \begin{bmatrix} \delta & \theta_n^2\sigma \\ \sigma\delta & \sigma^2\theta_n^2 \end{bmatrix}$$

and $\rho(A)$ is the spectral radius of A . By selecting the approximate ($\varepsilon=0$) optimal value $\theta_n = \frac{3\tau+1}{3\tau\sigma^2+3\tau+2}$, $\rho(A) < 1$. So we know that the linear D-N velocity sequence $\{u_{h,1}^n, u_{h,2}^n\}$ converges to the true solution $(u_{h,1}, u_{h,2})$. \square

Based on Theorem 4.1 and a similar argument as before, we have

Theorem 4.2. *Assume that R_e and θ_n are sufficiently small, then the linear D-N pressure sequence in Algorithm 4.1 $\{p_{h,1}^n, p_{h,2}^n\}$ converges to the true solution $(p_{h,1}, p_{h,2})$.*

5. THE NEUMANN-NEUMANN ITERATIVE ALGORITHM

Let us consider now another well-known nonoverlapping DDM, the Neumann-Neumann (N-N) iterative algorithm, for solving (2.6). We make an additional assumption that Ω_1 is also not an interior subdomain.

Similar to the above section, let $V_h \subset V$ and $M_h \subset M$ be finite element spaces. We also assume that the pressure space M_h consists of functions which are discontinuous across inter-element boundaries. Moreover, we assume that the pressure has a zero mean value. Similar to Section 3, we can also define the corresponding subspaces $V_{h,k}, M_{h,k}, k = 1, 2$. However, we don't assume that functions in $M_{h,1}$ vanish at a point in Ω_1 .

Following [17], we may define the N-N iterative algorithm as follows: For any $\lambda_h^0 \in \hat{\Phi}_h$ and $p_{h,k}^0 \in M_{h,k} \cap L_0^2(\Omega_k), k = 1, 2$, the sequences $(u_{h,k}^n, p_{h,k}^n) \in V_{h,k} \times M_{h,k} \cap L_0^2(\Omega_k)$ are defined by

$$\left\{ \begin{aligned} \frac{1}{R_e}a_1(u_{h,1}^n, v) + b_1(u_{h,1}^n, u_{h,1}^n, v) + c_1(v, p_{h,1}^n) &= (f, v)_1, \quad \forall v \in V_{h,1}^0 \\ c_1(u_{h,1}^n, q) &= 0, \quad \forall q \in M_{h,1} \cap L_0^2(\Omega_1) \\ \gamma_0 u_{h,1}^n &= \lambda_h^{n-1}, \quad \text{on } \Gamma, \\ \int_{\Omega_1} p_{h,1}^n dx &= - \int_{\Omega_2} p_{h,2}^{n-1} dx, \end{aligned} \right.$$

and

$$\left\{ \begin{aligned} \frac{1}{R_e} a_2(u_{h,2}^n, v) + b_2(u_{h,2}^n, u_{h,2}^n, v) + c_2(v, p_{h,2}^n) &= (f, v)_2, \quad \forall v \in V_{h,2}^0 \\ c_2(u_{h,2}^n, q) &= 0, \quad \forall q \in M_{h,2} \cap L_0^2(\Omega_2) \\ \gamma_0 u_{h,2}^n &= \lambda_h^{n-1}, \quad \text{on } \Gamma, \\ \int_{\Omega_2} p_{h,2}^n dx &= - \int_{\Omega_1} p_{h,1}^{n-1} dx, \end{aligned} \right.$$

and $(\psi_{h,k}^n, \pi_{h,k}^n) \in V_{h,k} \times M_{h,k}$, for $k = 1, 2$, are defined by

$$\left\{ \begin{aligned} \frac{1}{R_e} a_k(\psi_{h,k}^n, v) + b_k(\psi_{h,k}^n, \psi_{h,k}^n, v) + c_k(v, \pi_{h,k}^n) &= \sum_{j=1}^2 (f, \rho_{h,j} \gamma_0 v)_j \\ &\quad - a_j(u_{h,j}^n, \rho_{h,j} \gamma_0 v) \\ &\quad - b_j(u_{h,j}^n, u_{h,j}^n, \rho_{h,j} \gamma_0 v) \\ &\quad - c_j(\rho_{h,j} \gamma_0 v, u_{h,j}^n), \quad \forall v \in V_{h,k} \\ c_k(\psi_{h,k}^n, q) &= 0, \quad \forall q \in M_{h,k}. \end{aligned} \right.$$

Set

$$\lambda_h^n = \lambda_h^{n-1} + \theta(\gamma_0 \psi_{h,1}^n + \gamma_0 \psi_{h,2}^n).$$

Using a similar argument as before, we can prove

Theorem 5.1. *Assume that R_e is sufficiently small and θ is suitably chosen, then the N-N velocity iterates $\{u_{h,1}^n, u_{h,2}^n\}$ converge geometrically to the true solution $(u_{h,1}, u_{h,2})$.*

and

Theorem 5.2. *Assume that R_e is sufficiently small and θ is suitably chosen, then the N-N pressure iterates $\{p_{h,1}^n, p_{h,2}^n\}$ converge geometrically to the true solution $(p_{h,1}, p_{h,2})$.*

6. NUMERICAL RESULTS

For a small Reynolds' number, the steady Navier-Stokes equations can be considered as a Stokes problem perturbed by the nonlinear convection term. In this section, we shall illustrate the behavior of the linear D-N Algorithm 4.1 developed in Section 4. In this situation, the computer implementation is simply one for the Stokes problem on each subdomains, for which several finite element methods are available.

Our choice of method is the Taylor-Hood P_2 - P_1 triangular elements. More precisely, we discretize the velocities by piecewise quadratic basis functions, and the pressure by piecewise linear basis functions. The nodes for the velocities are the vertices and the midpoints of edges of the triangles; those for the pressure are the vertices of triangles.

On each subdomains, the finite element discretization of the Stokes problem in Algorithm 4.1 leads to the saddle point problem

$$\begin{pmatrix} A_h & B_h^T \\ B_h & 0 \end{pmatrix} \begin{pmatrix} u_h \\ p_h \end{pmatrix} = \begin{pmatrix} G_h \\ 0 \end{pmatrix},$$

where $A_h = (a(\phi_j, \phi_k))$, $B_h = (c(\phi_j, \psi_k))$, and $G_h = ((g, \phi_j))$, ϕ_j and ψ_k being the piecewise quadratic and piecewise linear nodal bases, respectively. The solution to the above saddle point problem can be obtained by a straightforward elimination procedure:

$$\begin{aligned} p_h &= (B_h A_h^{-1} B_h^T)^{-1} B_h A_h^{-1} G_h, \\ u_h &= A_h^{-1} (G_h - B_h^T p_h). \end{aligned}$$

Our assumption that the inf-sup condition (2.5) be satisfied ensures the invertibility of $B_h A_h^{-1} B_h^T$. Thus, the above elimination procedure makes sense.

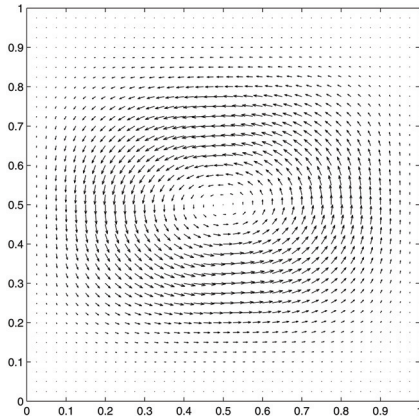


FIGURE 6.1. Flow field (u_h, v_h) .

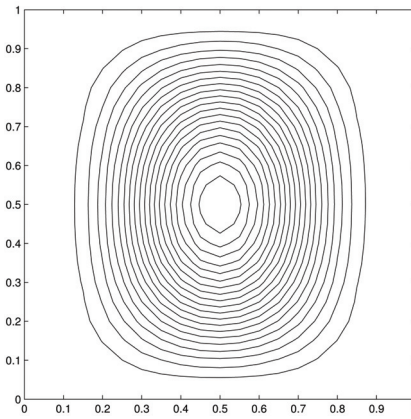


FIGURE 6.2. Pressure contours.

Now for the two-subdomain problem with $\Omega = \Omega_1 \cup \Omega_2$, denote by $A_{h,i}$, $B_{h,i}$, and $G_{h,i}^n$ the corresponding quantities for the subdomain i , $i = 1, 2$. The linear Dirichlet-Neumann iterative algorithm then becomes the iteration of the following sequence of steps:

$$\begin{pmatrix} A_{h,1} & B_{h,1}^T \\ B_{h,1} & 0 \end{pmatrix} \begin{pmatrix} u_{h,1}^n \\ p_{h,1}^n \end{pmatrix} = \begin{pmatrix} G_{h,1}^n \\ 0 \end{pmatrix},$$

where $u_{h,1}^n|_{\partial\Omega_1 \setminus \Gamma} = 0$, $u_{h,1}^n|_{\Gamma} = g_h^{n-1}$,

$$\begin{pmatrix} A_{h,2} & B_{h,2}^T \\ B_{h,2} & 0 \end{pmatrix} \begin{pmatrix} u_{h,2}^n \\ p_{h,2}^n \end{pmatrix} = \begin{pmatrix} G_{h,2}^n \\ 0 \end{pmatrix},$$

where $u_{h,2}^n|_{\partial\Omega_2 \setminus \Gamma} = 0$, and

$$g_h^n = \theta_n u_{h,2}^n|_{\Gamma} + (1 - \theta_n) g_h^{n-1},$$

where $G_{h,1}^n$, $G_{h,2}^n$ are associated with the right hand side terms of the first and fifth equalities in the Algorithm 4.1.

To get the iterations started, we set $u_{h,1}^0 = u_{h,2}^0 = 0$ and $g_h^0 = 0$. The Dirichlet boundary conditions for $u_{h,1}^n$ and $u_{h,2}^n$ are easily enforced by explicit elimination, which results in a reduced saddle point problem with a modified right hand side to which the elimination procedure discussed above applies.

Since only ∇p appears in the Navier-Stokes equations, the pressure p is determined up to an additive constant. For pressure continuous across the interface Γ , we choose a point P on Γ and enforce that $p(P) = 0$.

It is convenient to express the flow field in terms of a stream function $\psi = \psi(x, y)$, which determines the velocities $(u, v) = (\psi_y, -\psi_x)$. In the test cases presented below, a uniform grid with 20 triangles in each spatial direction was used. The unit square $\Omega = (0, 1)^2$ was divided into two non-overlapping subdomains $\Omega_1 = (0, \frac{1}{2}) \times (0, 1)$ and $\Omega_2 = (\frac{1}{2}, 1) \times (0, 1)$, with the interface $\Gamma = \{\frac{1}{2}\} \times [0, 1]$. The point P at which $p = 0$ was chosen to be $(\frac{1}{2}, \frac{1}{2})$. We took $\theta_n = 0.2$.

Test case 1: The forcing term f was chosen so that $\psi = x^2(1-x)^2y^4(1-y)^4$ and $p = x^4(1-x)^4y^2(1-y)^2 - 2^{-12}$ at $R_e = 100$. See Figures 6.1 and 6.2.

Test case 2: $\psi = x^4y^4(1-x)^2(1-y)^2$ and $p = (x - \frac{1}{2})^2 - (y - \frac{1}{2})^2$, $R_e = 100$. See Figures 6.3 and 6.4.

The H^1 and L^2 norms of the error $u_h^n - u_h$ are given by

$$\|u_h^n - u_h\|_{H^1} = \sqrt{\|u_{h,1}^n - u_{h,1}\|_{H^1}^2 + \|u_{h,2}^n - u_{h,2}\|_{H^1}^2},$$

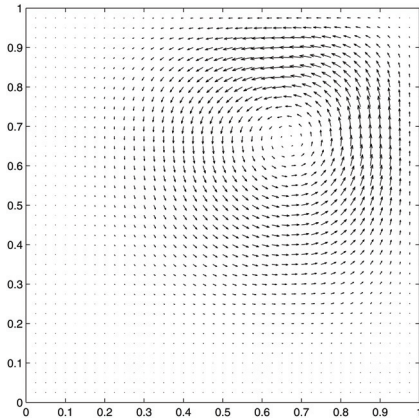


FIGURE 6.3. Flow field (u_h, v_h) .

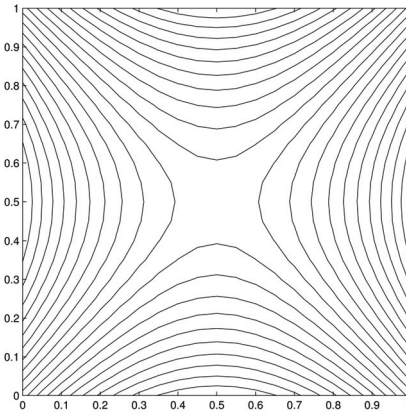


FIGURE 6.4. Pressure contours.

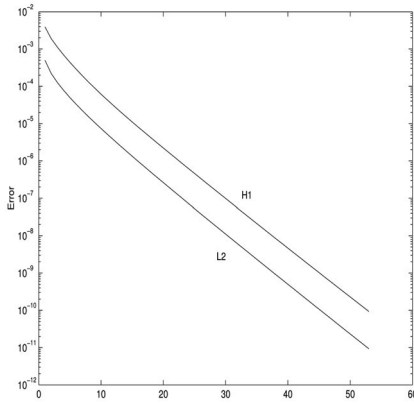


FIGURE 6.5. Plots of errors for test case 1.

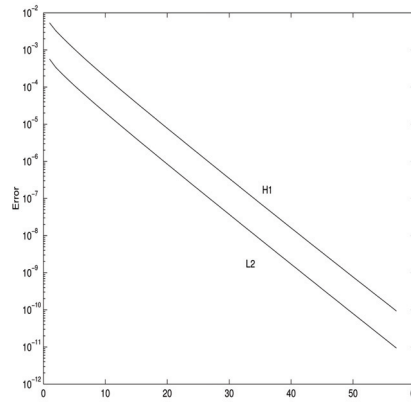


FIGURE 6.6. Plots of errors for test case 2.

and

$$\|u_h^n - u_h\|_{L^2} = \sqrt{\|u_{h,1}^n - u_{h,1}\|_{L^2}^2 + \|u_{h,2}^n - u_{h,2}\|_{L^2}^2}.$$

Plots of these errors *versus* n for test cases 1 and 2 are given in Figures 6.5 and 6.6, respectively. It is clear that the convergence $(u_{h,1}^n, u_{h,2}^n) \rightarrow u_h = (u_{h,1}, u_{h,2})$, as established in Theorem 4.1, is honored.

Acknowledgements. We thank the anonymous referees for many constructive comments and suggestions which led to an improved presentation of this paper.

REFERENCES

- [1] J. Cahouet, On some difficulties occurring in the simulation of incompressible fluid flows by domain decomposition methods, in *Proc. of the First International Symposium On Domain Decomposition Methods for Partial Differential Equations*, R. Glowinski, G. Golub, G. Meurant and J. Periaux Eds., SIAM, Philadelphia, PA (1988).
- [2] X.C Cai, D.E. Keyes and V. Venkatakrishnan, Newton-Krylov-Schwarz: An implicit solver for CFD, in *Proc. of the Eighth International Conference on Domain Decomposition Methods in Science and Engineering*, R. Glowinski, J. Periaux, Z.C. Shi and O.B. Widlund Eds., Wiley, Strasbourg (1997).
- [3] T.F. Chan and T.P. Mathew, Domain decomposition algorithm. *Acta Numerica* (1994) 61–143.
- [4] P.G. Ciarlet, *The Finite Element Method for Elliptic Problems*. North-Holland, Amsterdam (1978).

- [5] Q.V. Dinh, R. Glowinski, J. Periaux and G. Terrason, On the coupling of viscous and inviscid models for incompressible fluid flows via domain decomposition, in *Proc. the First International Symposium On Domain Decomposition Methods for Partial Differential Equations*, R. Glowinski, G. Golub, G. Meurant and J. Periaux Eds., SIAM, Philadelphia, PA (1988).
- [6] L. Fatone, P. Gervasio and A. Quarteroni, Multimodels for incompressible flows. *J. Math. Fluid Dynamics* **2** (2000) 126–150.
- [7] M. Fortin and R. Aboulaich, Schwarz's Decomposition Method for Incompressible Flow Problems, in *Proc. of the First International Symposium On Domain Decomposition Methods for Partial Differential Equations*, R. Glowinski, G. Golub, G. Meurant and J. Periaux Eds., SIAM, Philadelphia, PA (1988).
- [8] V. Girault and P.A. Raviart, *Finite Element Methods for Navier-Stokes Equations, Theory and Algorithms*. Springer-Verlag, Berlin (1986).
- [9] M. Gunzburger and H.K. Lee, An optimization-based domain decomposition method for the Navier-Stokes equations. *SIAM J. Numer. Anal.* **37** (2000) 1455–1480.
- [10] M. Gunzburger and R. Nicolaides, On substructuring algorithms and solution techniques for numerical approximation of partial differential equations. *Appl. Numer. Math.* **2** (1986) 243–256.
- [11] P. Le Tallec, Domain decomposition methods in computational mechanics. *Comput. Mech. Adv.* **1** (1994) 121–220.
- [12] P.L. Lions, On the Schwarz alternating method, in *Proc. of the First International Symposium on Domain Decomposition Methods for Partial Differential Equations*, R. Glowinski, G.H. Golub, G.A. Meurant and J. Periaux Eds., SIAM, Philadelphia (1988) 1–42.
- [13] S.H. Lui, On Schwarz alternating methods for nonlinear PDEs. *SIAM J. Sci. Comput.* **21** (2000) 1506–1523.
- [14] S.H. Lui, On Schwarz alternating methods for the incompressible Navier-Stokes equations. *SIAM J. Sci. Comput.* **22** (2001) 1974–1986.
- [15] S.H. Lui, On linear monotone iteration and Schwarz methods for nonlinear elliptic PDEs. *Numer. Math.* **93** (2002) 109–129.
- [16] L.D. Marini and A. Quarteroni, A relaxation procedure for domain decomposition methods using finite elements. *Numer. Math.* **55** (1989) 575–598.
- [17] A. Quarteroni and A. Valli, *Domain Decomposition Methods for Partial Differential Equations*. Oxford Science Publications (1999).
- [18] B.F. Smith, P.E. Bjorstad and W.D. Gropp, *Domain Decomposition: Parallel Multilevel Algorithms for Elliptic Partial Differential Equations*. Cambridge University Press, Cambridge, UK (1996).
- [19] R. Teman, *The Navier-Stokes Equations, Theory and Numerical Analysis*. North-Holland, Amsterdam (1977).
- [20] J. Xu and J. Zou, Some nonoverlapping domain decomposition methods. *SIAM Rev.* **40** (1998) 867–914.